

Tuba

# EVERYBODY'S EVERYTHING (KARATE)

music by Tyrone Moss and Milton Brown  
arranged by TOM WALLACE  
percussion by TONY McCUTCHEEN

Latin rock  $\text{♩} = 138$

Musical score for Tuba part of 'Everybody's Everything (Karate)'. The score is written in bass clef with a key signature of one flat (Bb) and a tempo of 138 beats per minute. It consists of 48 measures across 10 staves. The piece is in Latin rock style. Dynamics include *f*, *mf*, *ff*, *fff*, and *p*. There are several accents and slurs. A 'SOLI' section begins at measure 22. Rehearsal marks are present at measures 11, 22, 31, 39, and 43. The score ends with a double bar line at measure 48.

KARATE © 1966 Renewed 1994 DANDELION MUSIC CO.  
EVERYBODY'S EVERYTHING © 1971 DANDELION MUSIC CO.  
This arrangement © 2003 DANDELION MUSIC CO. ALL RIGHTS RESERVED

Tuba

# EVERYBODY'S EVERYTHING (KARATE)

music by Tyrone Moss and Milton Brown  
arranged by TOM WALLACE  
percussion by TONY McCUTCHEEN

Latin rock  $\text{♩} = 138$

Musical score for Tuba part of 'Everybody's Everything (Karate)'. The score is written in bass clef with a key signature of one flat (Bb) and a tempo of 138 beats per minute. It consists of 48 measures across 10 staves. The piece is in Latin rock style. Dynamics include *f*, *mf*, *ff*, *fff*, and *p*. There are several accents and slurs. A 'SOLI' section begins at measure 22. Rehearsal marks are present at measures 11, 22, 31, 39, and 43. The score ends with a double bar line at measure 48.

KARATE © 1966 Renewed 1994 DANDELION MUSIC CO.  
EVERYBODY'S EVERYTHING © 1971 DANDELION MUSIC CO.  
This arrangement © 2003 DANDELION MUSIC CO. ALL RIGHTS RESERVED

Recorded by KISS

# SHOUT IT OUT LOUD

Words and Music by PAUL STANLEY,  
GENE SIMMONS and BOB EZRIN  
Arranged by PAUL MURTHA

TUBA

Driving Rock!

Musical score for Tuba part of 'Shout It Out Loud'. The score is written in bass clef with a key signature of one flat (B-flat) and a 4/4 time signature. It consists of 10 staves of music. The first staff begins with a '2' above the first measure, indicating a double bar line. The score includes various dynamics such as *f*, *mf*, *fp*, *f*, and *fff*. There are also accents (^) and slurs (>) throughout. Measure numbers 9, 17, 26, 34, 42, 51, 8, and 59 are marked in boxes. The piece concludes with a double bar line and a final *fff* dynamic.

Copyright © 1976 HORI PRODUCTIONS AMERICA, INC., ALL BY MYSELF MUSIC and CAFE AMERICANA

Copyright Renewed

This arrangement Copyright © 2007 HORI PRODUCTIONS AMERICA, INC., ALL BY MYSELF MUSIC and CAFE AMERICANA

All Rights for HORI PRODUCTIONS AMERICA, INC., and ALL BY MYSELF MUSIC Controlled and Administered by UNIVERSAL - POLYGRAM INTERNATIONAL PUBLISHING, INC.

All Rights for CAFE AMERICANA in the U.S. Administered by INTERSONG U.S.A., INC.

All Rights outside the U.S. excluding Japan Controlled and Administered by UNIVERSAL - POLYGRAM INTERNATIONAL PUBLISHING, INC.

All Rights Reserved Used by Permission

03745254

Shout It Out Loud

Recorded by KISS

# SHOUT IT OUT LOUD

Words and Music by PAUL STANLEY,  
GENE SIMMONS and BOB EZRIN  
Arranged by PAUL MURTHA

TUBA

Driving Rock!

Musical score for Tuba part of 'Shout It Out Loud'. The score is written in bass clef with a key signature of one flat (B-flat) and a 4/4 time signature. It consists of 10 staves of music. The first staff begins with a '2' above the first measure, indicating a double bar line. The score includes various dynamics such as *f*, *mf*, *fp*, *f*, and *fff*. There are also accents (^) and slurs (>) throughout. Measure numbers 9, 17, 26, 34, 42, 51, 8, and 59 are marked in boxes. The piece concludes with a double bar line and a final *fff* dynamic.

Copyright © 1976 HORI PRODUCTIONS AMERICA, INC., ALL BY MYSELF MUSIC and CAFE AMERICANA

Copyright Renewed

This arrangement Copyright © 2007 HORI PRODUCTIONS AMERICA, INC., ALL BY MYSELF MUSIC and CAFE AMERICANA

All Rights for HORI PRODUCTIONS AMERICA, INC., and ALL BY MYSELF MUSIC Controlled and Administered by UNIVERSAL - POLYGRAM INTERNATIONAL PUBLISHING, INC.

All Rights for CAFE AMERICANA in the U.S. Administered by INTERSONG U.S.A., INC.

All Rights outside the U.S. excluding Japan Controlled and Administered by UNIVERSAL - POLYGRAM INTERNATIONAL PUBLISHING, INC.

All Rights Reserved Used by Permission

03745254

Shout It Out Loud

Tuba

# SCREAM & SHOUT

Words and Music by Will Adams,  
Jet Martens and Baptiste Kouame  
Arranged by TOM WALLACE  
Percussion arranged by TONY McCUTCHEN

Hip house dance groove ♩ = 128

The musical score for the Tuba part of 'Scream & Shout' is written in bass clef with a key signature of one flat (Bb) and a 4/4 time signature. The tempo is marked as 128 beats per minute. The score consists of 57 measures across seven staves. It begins with a dynamic of *f* and includes various dynamics such as *ff*, *f*, *mf*, *ff*, *mf*, *f*, *pp*, *f*, *ff*, and *fff*. The piece features a consistent eighth-note rhythmic pattern with occasional rests and accents. Measure numbers 5, 10, 15, 20, 25, 30, 35, 40, 45, and 50 are indicated in boxes. The score concludes with a *fff* dynamic at the end of the 57th measure.

Copyright © 2012 BMC Sapphire Songs, I Am Composing LLC, Musciclusters BV and Lord Pharaoh JB Music  
This arrangement Copyright © 2011 BMC Sapphire Songs, I Am Composing LLC, Musciclusters BV and Lord Pharaoh JB Music  
All Rights for BMC Sapphire Songs and I Am Composing LLC Administered by BMC Rights Management (LS) LLC  
All Rights for Musciclusters BV Administered by Sony/ATV Music Publishing LLC, 8 Music Square West, Nashville, TN 37203  
All Rights for Lord Pharaoh JB Music Administered by Kobalt Songs Music Publishing  
All Rights Reserved. Used by Permission  
Reprinted by Permission of Hal Leonard Corporation

Tuba

# SCREAM & SHOUT

Words and Music by Will Adams,  
Jet Martens and Baptiste Kouame  
Arranged by TOM WALLACE  
Percussion arranged by TONY McCUTCHEN

Hip house dance groove ♩ = 128

This is an identical copy of the musical score for the Tuba part of 'Scream & Shout' as shown above. It includes the same notation, dynamics, and measure numbers.

Copyright © 2012 BMC Sapphire Songs, I Am Composing LLC, Musciclusters BV and Lord Pharaoh JB Music  
This arrangement Copyright © 2011 BMC Sapphire Songs, I Am Composing LLC, Musciclusters BV and Lord Pharaoh JB Music  
All Rights for BMC Sapphire Songs and I Am Composing LLC Administered by BMC Rights Management (LS) LLC  
All Rights for Musciclusters BV Administered by Sony/ATV Music Publishing LLC, 8 Music Square West, Nashville, TN 37203  
All Rights for Lord Pharaoh JB Music Administered by Kobalt Songs Music Publishing  
All Rights Reserved. Used by Permission  
Reprinted by Permission of Hal Leonard Corporation

Tuba

# MONSTER

words and music by  
GAVIN BROWN and JOHN COOPER  
arranged by JOE MURPHY  
percussion by JIM REED

Driving Metal ♩ = 134

Copyright © 2009 EMI APRIL MUSIC (CANADA) LTD., NOODLES FOR EVERYONE and PHOENIX MUSIC  
This arrangement © 2009 EMI APRIL MUSIC (CANADA) LTD., NOODLES FOR EVERYONE and PHOENIX MUSIC  
All Rights for NOODLES FOR EVERYONE and EMI APRIL MUSIC (CANADA) LTD. in the U.S. Controlled and Administered by EMI APRIL MUSIC INC.  
All Rights Reserved - International Copyright Secured - Used by Permission  
Reprinted with Permission of Hal Leonard Corporation

◆ ARRANGERS' ◆ PUBLISHING ◆ COMPANY ◆

Tuba

# MONSTER

Words and Music by  
GAVIN BROWN and JOHN COOPER  
arranged by JOE MURPHY  
percussion by JIM REED

Driving Metal ♩ = 134

Copyright © 2009 EMI APRIL MUSIC (CANADA) LTD., NOODLES FOR EVERYONE and PHOENIX MUSIC  
This arrangement © 2009 EMI APRIL MUSIC (CANADA) LTD., NOODLES FOR EVERYONE and PHOENIX MUSIC  
All Rights for NOODLES FOR EVERYONE and EMI APRIL MUSIC (CANADA) LTD. in the U.S. Controlled and Administered by EMI APRIL MUSIC INC.  
All Rights Reserved - International Copyright Secured - Used by Permission  
Reprinted with Permission of Hal Leonard Corporation

# Tuba

# STARSHIPS

Words and Music by Nadir Khayat, Onika Maraj,  
Carl Falk, Wayne Hector and Rami Yacoub  
arranged by TOM WALLACE  
perc. by TONY McCUTCHEN

Hip house ♩ = 132

5 6 7 8 9 10 11 12 13 14 15 16 17 18 19 20 21 22 23 24 25 26 27 28 29 30 31 32 33 34 35 36 37 38 39 40 41 42 43 44 45 46 47 48

*f* *simile* *ff* *sub. mf* *f* *ff* *p* *marcato simile* *ff* *fff*

Copyright © 2012 Sony/ATV Music Publishing LLC, Songs Of RedOne, 2101 Songs, Songs Of Universal, Inc., Harajuku Barbie Music, Money Mack Music, Rami Productions and Warner/Chappell Music Ltd.  
This arrangement Copyright © 2012 Sony/ATV Music Publishing LLC, Songs Of RedOne, 2101 Songs, Songs Of Universal, Inc., Harajuku Barbie Music, Money Mack Music, Rami Productions and Warner/Chappell Music Ltd.  
All Rights on behalf of Sony/ATV Music Publishing LLC, Songs Of RedOne and 2101 Songs Administered by Sony/ATV Music Publishing LLC, 8 Music Square West, Nashville, TN 37203  
All Rights on behalf of Harajuku Barbie Music and Money Mack Music Administered by Songs Of Universal, Inc.  
All Rights on behalf of Rami Productions Administered by Kobalt Music Publishing America, Inc.  
All Rights on behalf of Warner/Chappell Music Ltd. in the U.S. and Canada Administered by Warner-Tamerlane Publishing Corp.  
International Copyright Secured All Rights Reserved  
Reprinted with Permission of Hal Leonard Corporation

# Tuba

# STARSHIPS

Words and Music by Nadir Khayat, Onika Maraj,  
Carl Falk, Wayne Hector and Rami Yacoub  
arranged by TOM WALLACE  
perc. by TONY McCUTCHEN

Hip house ♩ = 132

5 6 7 8 9 10 11 12 13 14 15 16 17 18 19 20 21 22 23 24 25 26 27 28 29 30 31 32 33 34 35 36 37 38 39 40 41 42 43 44 45 46 47 48

*f* *simile* *ff* *sub. mf* *f* *ff* *p* *marcato simile* *ff* *fff*

Copyright © 2012 Sony/ATV Music Publishing LLC, Songs Of RedOne, 2101 Songs, Songs Of Universal, Inc., Harajuku Barbie Music, Money Mack Music, Rami Productions and Warner/Chappell Music Ltd.  
This arrangement Copyright © 2012 Sony/ATV Music Publishing LLC, Songs Of RedOne, 2101 Songs, Songs Of Universal, Inc., Harajuku Barbie Music, Money Mack Music, Rami Productions and Warner/Chappell Music Ltd.  
All Rights on behalf of Sony/ATV Music Publishing LLC, Songs Of RedOne and 2101 Songs Administered by Sony/ATV Music Publishing LLC, 8 Music Square West, Nashville, TN 37203  
All Rights on behalf of Harajuku Barbie Music and Money Mack Music Administered by Songs Of Universal, Inc.  
All Rights on behalf of Rami Productions Administered by Kobalt Music Publishing America, Inc.  
All Rights on behalf of Warner/Chappell Music Ltd. in the U.S. and Canada Administered by Warner-Tamerlane Publishing Corp.  
International Copyright Secured All Rights Reserved  
Reprinted with Permission of Hal Leonard Corporation

Tuba

# SHE LOVES YOU

Words and Music by JOHN LENNON  
and PAUL McCARTNEY  
arranged by TOM WALLACE  
percussion by TONY McCUTCHEE

Fast rock  $\text{♩} = 168$

Musical score for Tuba part of 'She Loves You'. The score is written in bass clef with a 4/4 time signature. It consists of 52 measures across eight staves. The music features a driving rock rhythm with various dynamics including *ff*, *f*, and *sub. p*. There are several accents and slurs throughout the piece. Measure numbers 2, 3, 4, 5, 6, 7, 8, 9, 10, 11, 12, 13, 14, 15, 16, 17, 18, 19, 20, 21, 22, 23, 24, 25, 26, 27, 28, 29, 30, 31, 32, 33, 34, 35, 36, 37, 38, 39, 40, 41, 42, 43, 44, 45, 46, 47, 48, 49, 50, 51, and 52 are indicated above the notes.

Copyright © 1963 by NORTHERN SONGS, LTD., London, England  
All rights for the U.S.A., its territories and possessions and Canada assigned to and controlled by GIL MUSIC CORP.  
This arrangement Copyright © 1964 GIL MUSIC MUSIC CORP., 1650 Broadway, New York, N.Y. 10019  
Copyrights Renewed  
International Copyright Secured Made in U.S.A. All Rights Reserved

Tuba

# SHE LOVES YOU

Words and Music by JOHN LENNON  
and PAUL McCARTNEY  
arranged by TOM WALLACE  
percussion by TONY McCUTCHEE

Fast rock  $\text{♩} = 168$

Musical score for Tuba part of 'She Loves You'. The score is written in bass clef with a 4/4 time signature. It consists of 52 measures across eight staves. The music features a driving rock rhythm with various dynamics including *ff*, *f*, and *sub. p*. There are several accents and slurs throughout the piece. Measure numbers 2, 3, 4, 5, 6, 7, 8, 9, 10, 11, 12, 13, 14, 15, 16, 17, 18, 19, 20, 21, 22, 23, 24, 25, 26, 27, 28, 29, 30, 31, 32, 33, 34, 35, 36, 37, 38, 39, 40, 41, 42, 43, 44, 45, 46, 47, 48, 49, 50, 51, and 52 are indicated above the notes.

Copyright © 1963 by NORTHERN SONGS, LTD., London, England  
All rights for the U.S.A., its territories and possessions and Canada assigned to and controlled by GIL MUSIC CORP.  
This arrangement Copyright © 1964 GIL MUSIC MUSIC CORP., 1650 Broadway, New York, N.Y. 10019  
Copyrights Renewed  
International Copyright Secured Made in U.S.A. All Rights Reserved

# TWIST AND SHOUT

Words and Music by  
BERT RUSSELL and PHIL MEDLEY  
Arranged by PAUL JENNINGS  
Orchestrated by TERESA JENNINGS

TUBA

BRIGHT 60'S ROCK

Musical score for Tuba part of 'Twist and Shout'. The score is written in 2/4 time and consists of seven staves of music. The key signature has one flat (B-flat). The score includes various dynamics such as *mf*, *f*, *ff*, and *sub mf*. There are also performance markings like *mf-emo*, *cease*, and *mf build*. The score is divided into measures, with measure numbers 7, 15, 23, 31, 39, 45, and 53 marked in boxes. The final measure (53) includes the instruction 'sub mp - build' and a double bar line.

113-20040

© Copyright 1965 and 1968 by EMI PUBLISHING LTD. and LINCHEPPELL MUSIC, INC.  
The Arrangement © Copyright 1964 by EMI MUSIC PUBLISHING LTD. and LINCHEPPELL MUSIC, INC.  
All administrative rights for the U.S. and Canada controlled by SCREEN GEMS - EMI MUSIC, INC.  
6720 Sunset Blvd., Hollywood, CA 90028  
All Rights Reserved

TUBA

# From SPONGEBOB SQUAREPANTS SPONGEBOB SQUAREPANTS (Theme Song)

Words and Music by MARK HARRISON,  
BLAISE SMITH, STEVE HILLENBURG and DEREK DRYMON  
Arranged by PAUL LAVENDER

Dialogue:

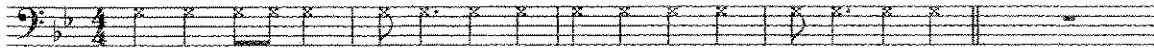
Captain:

Shipmates:

Captain:

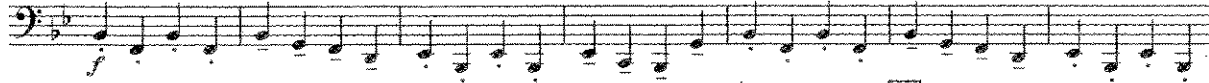
Shipmates (louder):

Sea Chanty March



Are ya read-y kids? Aye, aye cap-tain! I can't hear you! Aye, aye cap-tain!

6 %



To Coda

18

3



22

7

30

ff

sfz



Soli

3

f

D.S. al Coda



Coda



Copyright © 2001 by Tunes By Nickelodeon, Inc.  
This arrangement Copyright © 2004 by Tunes By Nickelodeon, Inc.  
All Rights Controlled and Administered by Famous Music Corporation  
International Copyright Secured All Rights Reserved

33745007

spongeBob SquarePants - 1

TUBA

# From SPONGEBOB SQUAREPANTS SPONGEBOB SQUAREPANTS (Theme Song)

Words and Music by MARK HARRISON,  
BLAISE SMITH, STEVE HILLENBURG and DEREK DRYMON  
Arranged by PAUL LAVENDER

Dialogue:

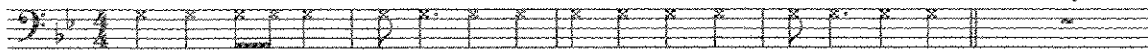
Captain:

Shipmates:

Captain:

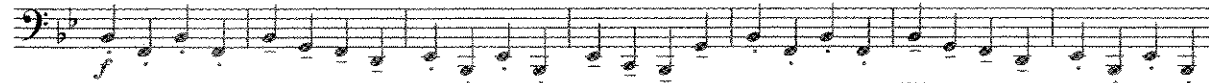
Shipmates (louder):

Sea Chanty March



Are ya read-y kids? Aye, aye cap-tain! I can't hear you! Aye, aye cap-tain!

6 %



To Coda

18

3



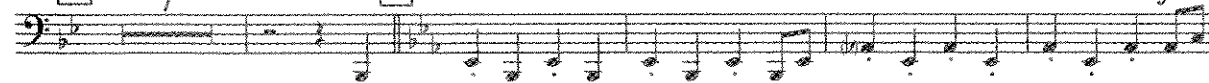
22

7

30

ff

sfz

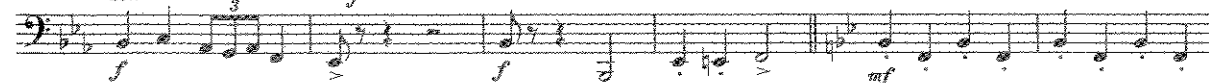


Soli

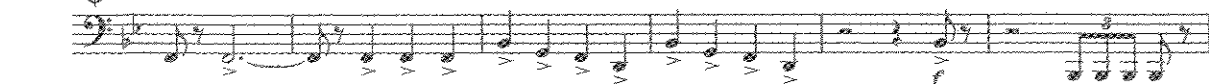
3

f

D.S. al Coda



Coda



Copyright © 2001 by Tunes By Nickelodeon, Inc.  
This arrangement Copyright © 2004 by Tunes By Nickelodeon, Inc.  
All Rights Controlled and Administered by Famous Music Corporation  
International Copyright Secured All Rights Reserved

33745007

spongeBob SquarePants - 1



# SCOOBY-DOO, WHERE ARE YOU?

TUBA

Words and Music by DAVID MOOK and BEN RALEIGH  
Arranged by DOUG ADAMS

Bright rock

1 2 3 4 5 6 7 8 9 10 11 12 13 14 15 16 17 18 19 20 21 22 23 24 25 26 27 28 29 30 31 32 33 34 35 36 37 38 39 40 41 42 43

© 1969 (Renewed) Super Songs Unlimited and Wise Brothers Music LLC  
All Rights for Super Songs Unlimited Administered by Warner-Tamerlane Publishing Corp.  
All Rights for Wise Brothers Music LLC Administered by Music Sales Corporation  
All Rights outside the U.S.A. Controlled by Chappell & Co.  
This Arrangement © 2003 Super Songs Unlimited, Wise Brothers Music LLC and Chappell & Co.  
All Rights Reserved including Public Performance

MBM03005

# SCOOBY-DOO, WHERE ARE YOU?

TUBA

Words and Music by DAVID MOOK and BEN RALEIGH  
Arranged by DOUG ADAMS

Bright rock

1 2 3 4 5 6 7 8 9 10 11 12 13 14 15 16 17 18 19 20 21 22 23 24 25 26 27 28 29 30 31 32 33 34 35 36 37 38 39 40 41 42 43

© 1969 (Renewed) Super Songs Unlimited and Wise Brothers Music LLC  
All Rights for Super Songs Unlimited Administered by Warner-Tamerlane Publishing Corp.  
All Rights for Wise Brothers Music LLC Administered by Music Sales Corporation  
All Rights outside the U.S.A. Controlled by Chappell & Co.  
This Arrangement © 2003 Super Songs Unlimited, Wise Brothers Music LLC and Chappell & Co.  
All Rights Reserved including Public Performance

MBM03005

TUBA

# CARTOON SHOW PART 3

(The Merry Go Round Broke Down, This Is It!)

Arranged by MIKE STORY

Bright

9 "The Merry Go Round Broke Down".  
Words and Music by CLIFF FRIEND and DAVE FRANKLIN

16 20 4 24

30 "This Is It!".  
Words and Music by MACK DAVID and JERRY LIVINGSTON

38 54 66 4

74

mf

f

mf

f

mf

f

f

This Arrangement © 1999 WARNER BROS. INC., HALLMARK MUSIC CO., INC.  
and POLYGRAM INTERNATIONAL PUBLISHING, INC.  
All Rights Reserved

MB9925

TUBA

# CARTOON SHOW PART 3

(The Merry Go Round Broke Down, This Is It!)

Arranged by MIKE STORY

Bright

9 "The Merry Go Round Broke Down".  
Words and Music by CLIFF FRIEND and DAVE FRANKLIN

16 20 4 24

30 "This Is It!".  
Words and Music by MACK DAVID and JERRY LIVINGSTON

38 54 66 4

74

mf

f

mf

f

mf

f

f

This Arrangement © 1999 WARNER BROS. INC., HALLMARK MUSIC CO., INC.  
and POLYGRAM INTERNATIONAL PUBLISHING, INC.  
All Rights Reserved

MB9925

Tuba

# COME OUT AND PLAY

music by BRYAN HOLLAND  
arranged by TOM WALLACE

Fast thick metal feel ♩ = 168

Musical score for Tuba, 'Come Out and Play'. The score is written in bass clef with a key signature of one flat (Bb) and a time signature of 4/4. It consists of 60 measures. The tempo is marked 'Fast thick metal feel' with a quarter note equal to 168 beats per minute. The score includes various dynamics such as *ff*, *f*, *mf*, *ffp*, and *fff*. Performance instructions include '(sneak / stagger breathe)', '7 simile', '(div.)', and '53 simile'. The score is published by Gamete Music and administered by Wixen Music Pub. Inc.

Tuba

# COME OUT AND PLAY

music by BRYAN HOLLAND  
arranged by TOM WALLACE

Fast thick metal feel ♩ = 168

Musical score for Tuba, 'Come Out and Play'. The score is written in bass clef with a key signature of one flat (Bb) and a time signature of 4/4. It consists of 60 measures. The tempo is marked 'Fast thick metal feel' with a quarter note equal to 168 beats per minute. The score includes various dynamics such as *ff*, *f*, *mf*, *ffp*, and *fff*. Performance instructions include '(sneak / stagger breathe)', '7 simile', '(div.)', and '53 simile'. The score is published by Gamete Music and administered by Wixen Music Pub. Inc.