

Fanfare "72"

Tuba  $\text{♩} = 120$

6

12

*fp*

Detailed description: This block contains the first system of a musical score for Tuba. It consists of three staves. The top staff is the Tuba part, starting with a tempo marking of quarter note = 120. It contains measures 1 through 12. The middle staff is a lower register part, and the bottom staff is a bass line. The key signature has one flat (B-flat). The time signature is common time (C). There are dynamic markings such as accents (>) and a fortissimo (fp) marking. A fermata is present over the final note of the first staff.

Fanfare "72"

Tuba  $\text{♩} = 120$

6

12

*fp*

Detailed description: This block contains the second system of a musical score for Tuba, identical to the first. It consists of three staves. The top staff is the Tuba part, starting with a tempo marking of quarter note = 120. It contains measures 1 through 12. The middle staff is a lower register part, and the bottom staff is a bass line. The key signature has one flat (B-flat). The time signature is common time (C). There are dynamic markings such as accents (>) and a fortissimo (fp) marking. A fermata is present over the final note of the first staff.

Fanfare "72"

Tuba  $\text{♩} = 120$

6

12

Detailed description: This block contains the third system of a musical score for Tuba, identical to the first two. It consists of three staves. The top staff is the Tuba part, starting with a tempo marking of quarter note = 120. It contains measures 1 through 12. The middle staff is a lower register part, and the bottom staff is a bass line. The key signature has one flat (B-flat). The time signature is common time (C). There are dynamic markings such as accents (>) and a fortissimo (fp) marking. A fermata is present over the final note of the first staff.

ON WIS Tuba

Handwritten musical score for Tuba. The score consists of ten staves of music in bass clef. The key signature is three flats (B-flat, E-flat, A-flat) and the time signature is common time (C). The music features a variety of rhythmic patterns, including quarter notes, eighth notes, and rests. There are several dynamic markings, such as accents (>) and slurs, throughout the piece. The notation is written in ink on a white background.

ON WIS / GRAND OL FLAG

Tuba

Handwritten musical score for Tuba. The score consists of ten staves of music in bass clef. The key signature is three flats (B-flat, E-flat, A-flat) and the time signature is common time (C). The music features a variety of rhythmic patterns, including quarter notes, eighth notes, and rests. There are several dynamic markings, such as accents (>) and slurs, throughout the piece. The notation is written in ink on a white background.

NOHS ALMA MATER

Tuba

Musical score for the first system of 'NOHS ALMA MATER'. It consists of four staves in bass clef with a key signature of three flats and a common time signature. The first staff is labeled 'Tuba'. The second staff contains a measure marked '11' and a 'Senior Soli' instruction. The third staff contains a measure marked 'TUTTI'. The fourth staff is empty.

STAR SPANGLED BANNER

Musical score for the first system of 'STAR SPANGLED BANNER'. It consists of four staves in bass clef with a key signature of three flats and a 3/4 time signature. The second staff contains a measure marked '9'. The third staff contains a measure marked '17'. The fourth staff is empty.

NOHS ALMA MATER

Tuba

Musical score for the second system of 'NOHS ALMA MATER'. It consists of four staves in bass clef with a key signature of three flats and a common time signature. The first staff is labeled 'Tuba'. The second staff contains a measure marked '11' and a 'Senior Soli' instruction. The third staff contains a measure marked 'TUTTI'. The fourth staff is empty.

STAR SPANGLED BANNER

Musical score for the second system of 'STAR SPANGLED BANNER'. It consists of four staves in bass clef with a key signature of three flats and a 3/4 time signature. The second staff contains a measure marked '9'. The third staff contains a measure marked '17'. The fourth staff is empty.

WAR EAGLE-ON WIS REPRISÉ

Tuba

9  
18  
28  
37  
47

47  
37  
28  
18  
9

Tuba

WAR EAGLE-ON WIS REPRISÉ

Tuba

# DRIVE ON NORTH OLMSTED

Dedicated to the memory of John Kepperley

Jack Lee, arr. BEM

March ♩ = 144



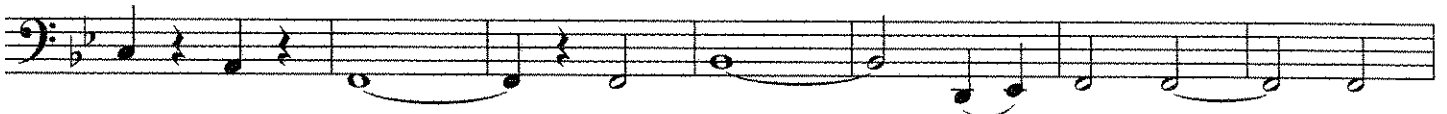
6



12



18



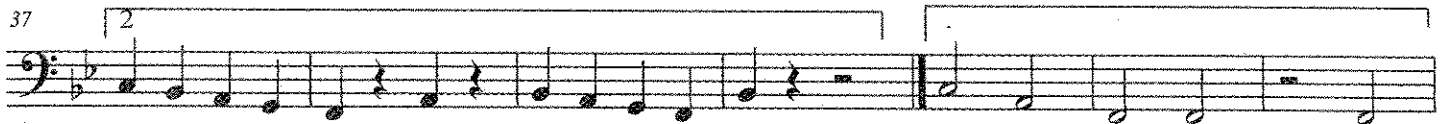
25



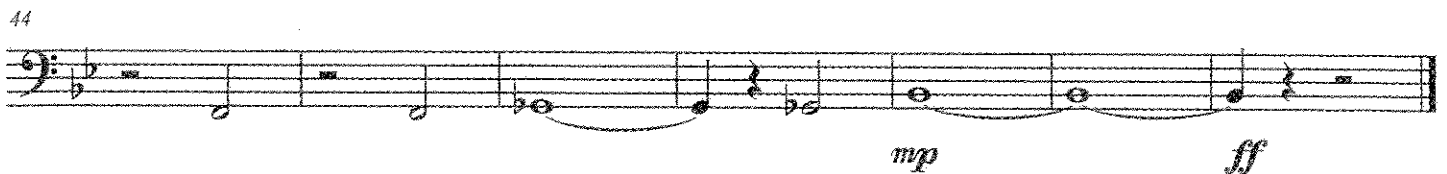
31



37



44



Tuba

# TALK TO ME, DANCE WITH ME

By STEVEN BAYS, DANTE DeCARO,  
PAUL HAWLEY & DUSTIN HAWTHORNE  
arranged by TOM WALLACE  
percussion by TONY McCUTCHEEN

Rock  $\text{♩} = 144$

Musical score for Tuba part of "Talk to Me, Dance with Me". The score consists of 10 staves of music in bass clef, 4/4 time, with a tempo of 144 beats per minute. The key signature has two flats. The score includes various dynamics such as *f*, *ff*, *mf*, *sub. mf*, and *fff*. There are also accents and slurs throughout the piece. Measure numbers 2, 6, 14, 18, 22, 26, 30, 34, 38, 42, 46, and 50 are indicated.

Published By Bend An Ear Music (SOCAN)  
Administered by Wixen Music Publishing, Inc.

Tuba

# TALK TO ME, DANCE WITH ME

By STEVEN BAYS, DANTE DeCARO,  
PAUL HAWLEY & DUSTIN HAWTHORNE  
arranged by TOM WALLACE  
percussion by TONY McCUTCHEEN

Rock  $\text{♩} = 144$

Musical score for Tuba part of "Talk to Me, Dance with Me". The score consists of 10 staves of music in bass clef, 4/4 time, with a tempo of 144 beats per minute. The key signature has two flats. The score includes various dynamics such as *f*, *ff*, *mf*, *sub. mf*, and *fff*. There are also accents and slurs throughout the piece. Measure numbers 2, 6, 14, 18, 22, 26, 30, 34, 38, 42, 46, and 50 are indicated.

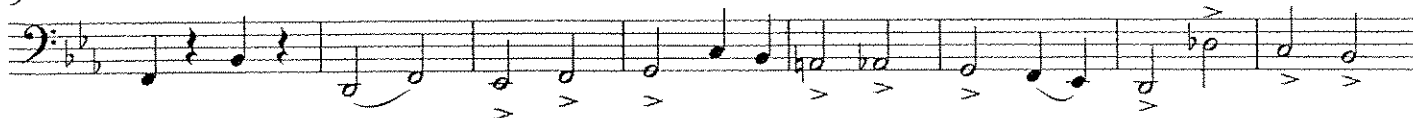
Published By Bend An Ear Music (SOCAN)  
Administered by Wixen Music Publishing, Inc.

# YOU (Miami U Howdy Do)

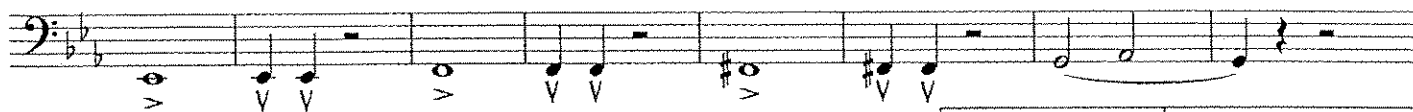
Tuba



9



17



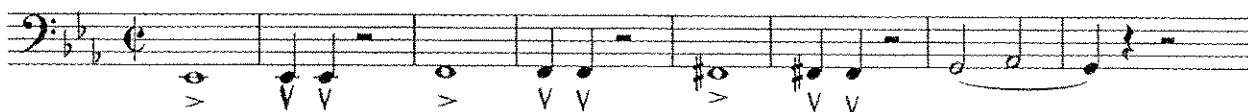
25



N...O...R...T...H...O.L.M.S.T.E.D.

# YOU (Miami U Howdy Do)

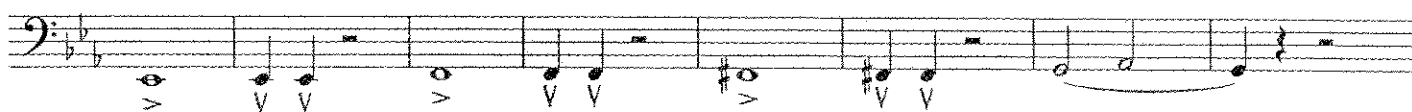
Tuba



9



17



25



N...O...R...T...H...O.L.M.S.T.E.D.